



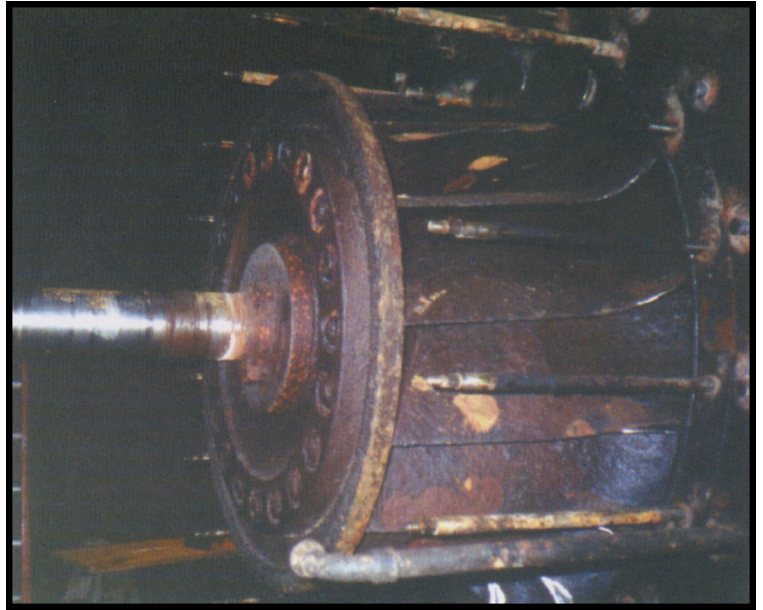
## PROJECT PROFILE

**PROJECT:** Turbine Refurbishment  
**LOCATION:** Austria

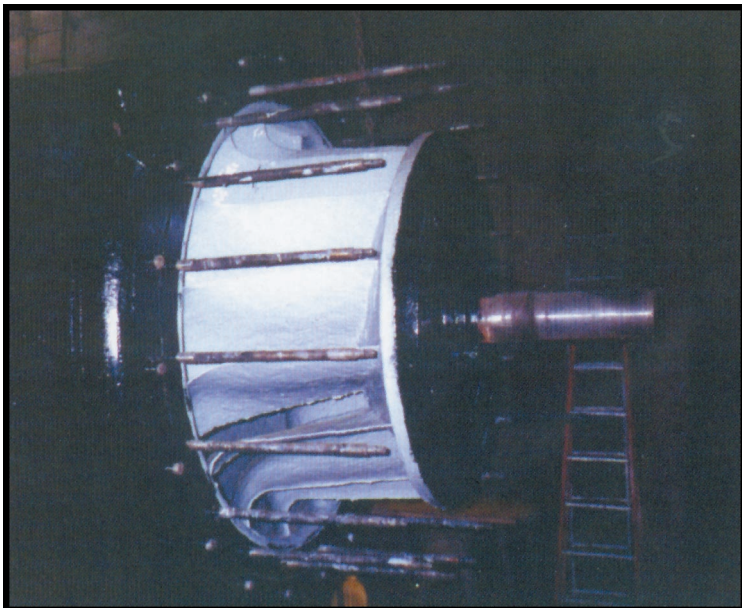
### THE PROBLEM

This turbine was originally built in 1923 and was used in a hydro-electric power plant.

As is apparent from the photograph, the whole turbine was badly worn after years of use without protection. A protective coating was required to protect the equipment from future erosion, corrosion and cavitation attack.



### THE SOLUTION



The turbine was dismantled and all metal surfaces were abrasive blasted to SA2 1/2.

All blasted surfaces were then coated with Cerami-Flex EG which was applied at approximately 1mm.

The outlet channel was blasted and coated with Chemi-Tech PU.

The turbine was then reassembled and put back into service.